



IT'S OKTU

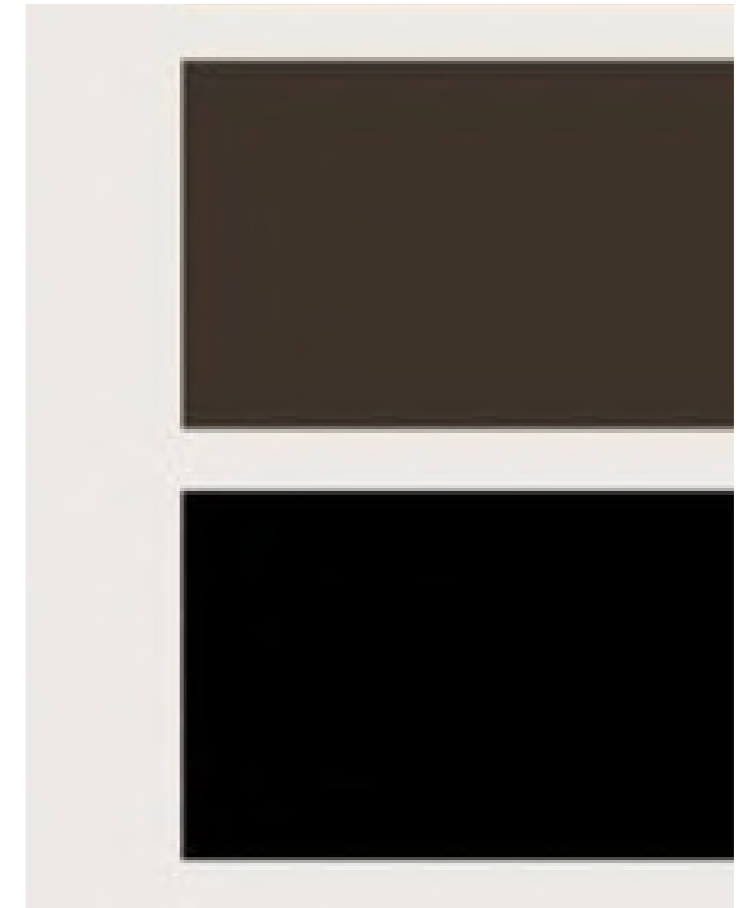
IN COLLABORATION WITH

**STU
DIO
G.**

HARLEY STREET CLINIC

RECEPTION & WAITING ROOM
DECEMBER 2023

COLOR PALETTE



LOOK AND FEEL



WALLS

to be refurbished via installation of mouldings and freshly re-painted



FLOOR

to be engineered hardwood in dark shade



LOOK & FEEL

lounge furniture, greenery, art

LOUNGE FURNITURE



FURNITURE
armchairs, small side tables, consoles



FURNITURE
sofas, greenery, floor lamps, side tables



FURNITURE
modular sofas

RECEPTION DESKS



RIBBED WITH MARBLE TOP



STONE



SIMPLE AND LINEAR

SEPARATION OF 2 RECEPTION AREAS



THROUGH GREENERY AND BANQUET SEATING



PANEL



THROUGH MODULAR SOFA

01 Space Analysis

- Site survey
- 2D plans and sections of existing site
- Initial concept and lighting studies
- Space configuration & circulation flow
- Budget planning
- Interactive meetings to discuss aesthetic, ergo-nomic & functional requirements.

02 Concept

- General configuration proposal, 2D General arrangement plans
- Establish general ambience & style, research & moodboards presentations
- Preview of 3D model proposal
- Establish final chromatic composition & materials
- Interactive meetings to finalise solutions - client feedback / final 3D renderings

03 Technical Package

- General arrangement layout plans, interior elevations & sections
- RCP (Reflected ceiling plan) & sections
- Electrical plans with lighting fixtures, outlets & switches
- Floor and walls finishes layouts
- Technical and manufacturing details of general and bespoke feature elements

04 Acquisitions

- List with materials, suppliers, furniture, fixtures & equipment, decorations (BOQ)
- Accessing the market
- Manufacturers and suppliers support
- Procurement assistance

STAGES 1-4

PREVIOUS WORK

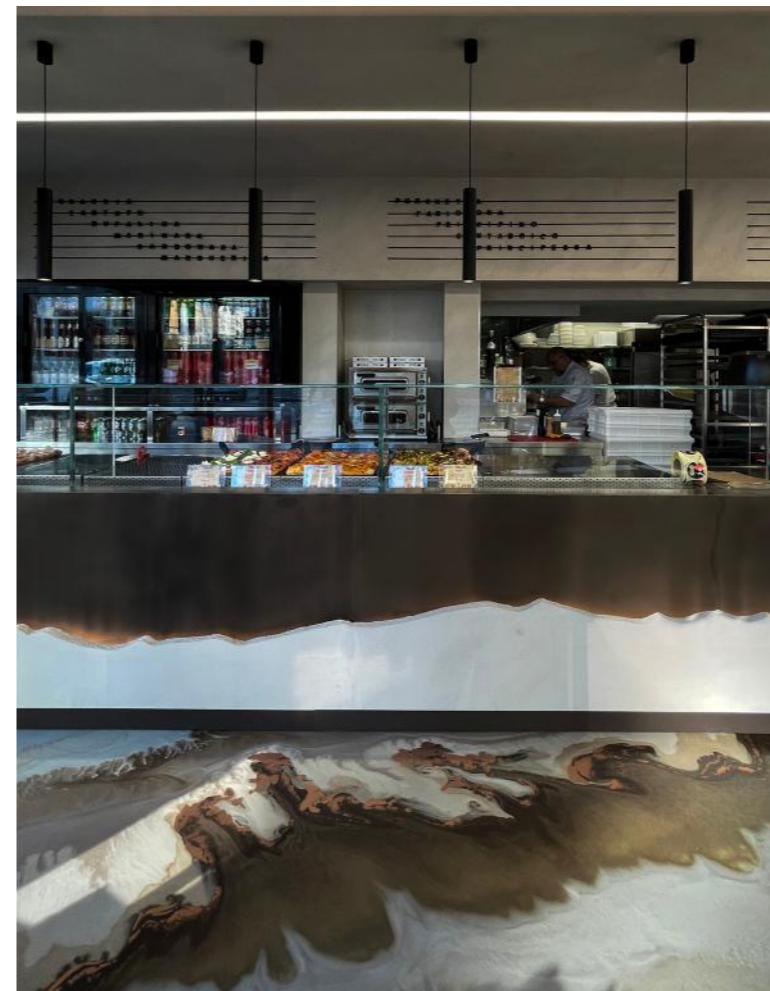
Kyubi Restaurant - The Arts Club



Reception - The Mandrake Hotel



Wilma's Pizza



Lounge Bar - Hotel de Crillon



www.itsoktu.com

www.studioguk.myportfolio.com